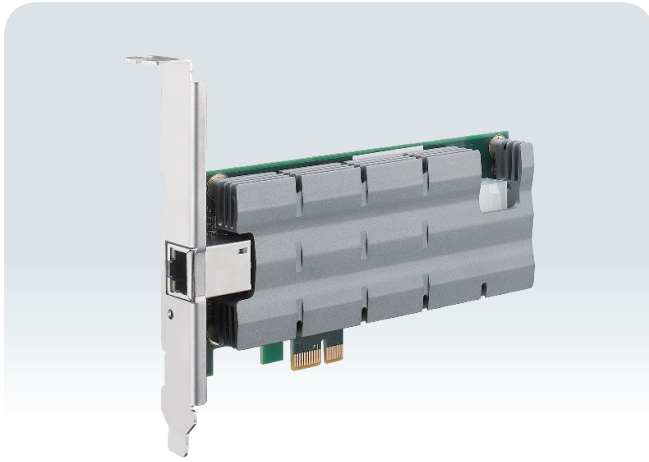


PE-2001H

Intel® I210 PCI Express PoE++ Expansion Card, PCI Express x1, IEEE 802.3bt Type 4 High Power compliant



Features

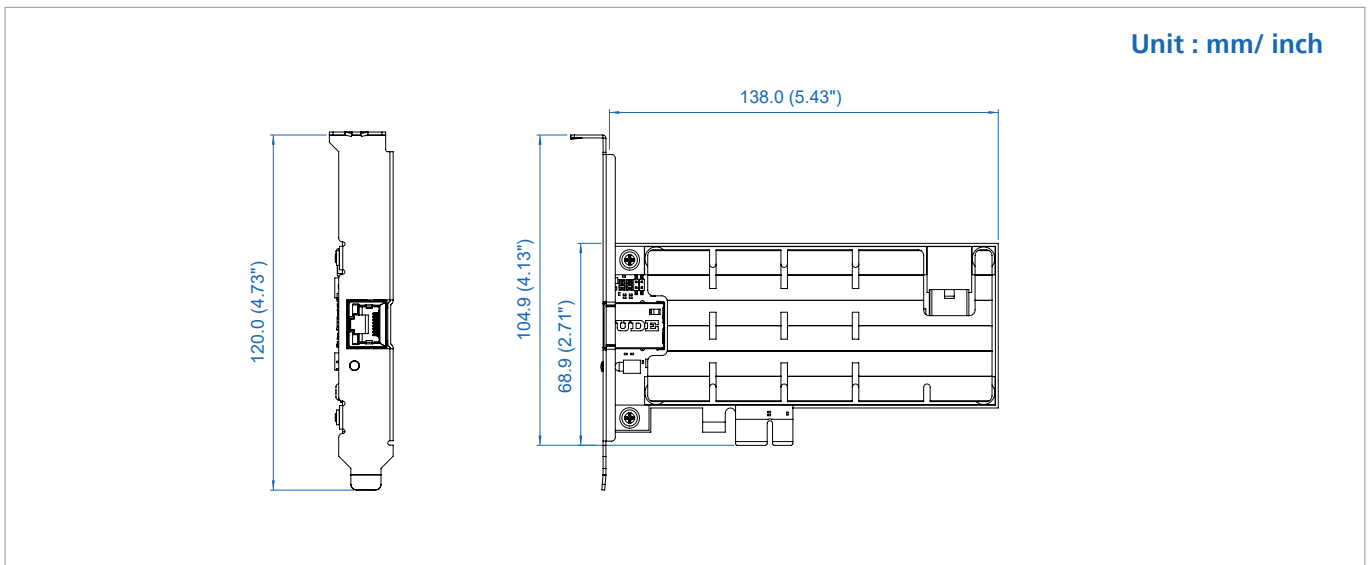
- Intel® I210 1GBASE-T Ethernet Controller supports up to 1Gbps data transfer
- PCI Express x1 interface, Full Height
- IEEE 802.3bt Power over Ethernet (High-Powered PoE, PoE++ PSE), RJ45 connector, max 100W Power Output at 48V DC, with PoE On/Off Control
- Supports up to 9728 bytes Jumbo Frame
- -25°C to 60°C Operating Temperature



Specifications

Ethernet	
Interface	PCI Express x1
LAN Controller	Intel® Ethernet Controller I210
LAN Controller Qty	1
Data Rate	1Gbps/100Mbps/10Mbps
Number of Port	1
Connector	RJ45
PoE Standard	<ul style="list-style-type: none"> ▪ IEEE 802.3bt Type 3 and Type 4 compliant ▪ IEEE 802.3at and 802.3af compliant
Power Requirement	
Output	<ul style="list-style-type: none"> ▪ Up to 100W Power Output @48V DC per port ▪ LED for PoE On/Off Mode
Power Connector	1 6-pin 12V ATX Power Connector

Software Support	
OS	Windows 11/10, Linux
Mechanical	
Dimensions	138mm x 68.9mm (5.43" x 2.71")
Bracket	Full height
Environment	
Operating Temperature	-25°C to 60°C (-13°F to 140°F) with airflow
Storage Temperature	-40°C to 85°C (-40°F to 185°F)
Humidity	5% to 95% Humidity, non-condensing
Relative Humidity	95% @60°C
EMC	CE, FCC



Unit : mm/ inch

Order Information

PE-2001H	1-port GigE High Power PoE PCI Express Expansion Card with Intel® I210 IT Controller
----------	--